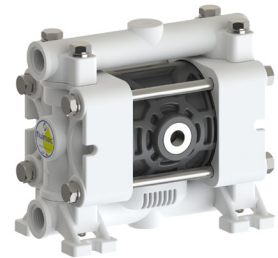


PP



PVDF+CF



POMc

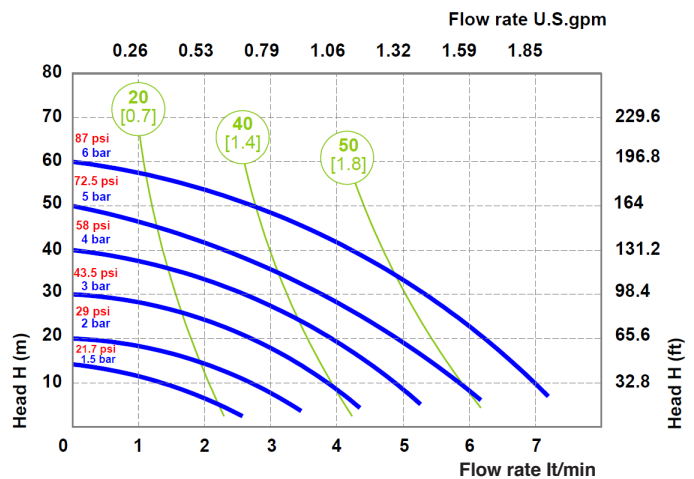
TECHNICAL DATA

Fluid connections	1/4" BSPP
Air connection	1/8" BSPP
Max. Flow rate	7 lt/min
Max air pressure	6 bar
Max delivery head	60 mt
Max Suction Lift Dry	3 mt
Max Suction Lift Wet	9,8 mt
Max Solid passing	2 mm
Noise level:	62 dB
Max Viscosity:	5000 cps
Displacement per Stroke:	18 CC ~

II 3/3 G Ex h IIC T4 Gc
II 3 D Ex h IIB T135°C Dc X

Displacement per stroke may vary based on suction condition, discharge head, air pressure and fluid type.

PERFORMANCE

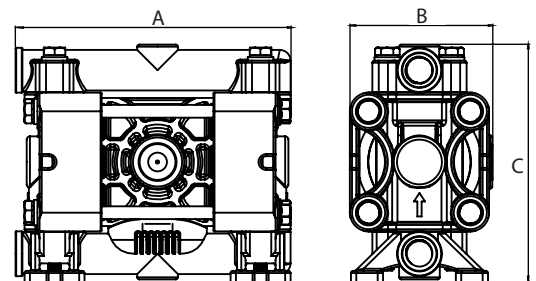


○ Air supply pressure
○ Air consumption Nit/min [SCFM]

The curves and performance values refer to pumps with submerged suction and a free delivery outlet with water at 20°C. These data may vary according to the construction materials and hydraulic conditions.

DIMENSIONS

	A	B	C	Net Weight	Temperature
PP	129 mm	67 mm	112 mm	0,84 kg	- 4 °C + 65 °C
PVDF	129 mm	67 mm	112 mm	0,84 kg	- 20 °C + 95 °C
POMc	129 mm	67 mm	112 mm	0,84 kg	- 5 °C + 80 °C



COMPOSITION

MODEL	CASING	DIAPHRAGM	BALLS	SEATS	GASKET	CONNECTIONS	ATEX	PORTS
P0008	P = PP KC = PVDF+CF O = POMc	NT = NBR+PTFE	T = PTFE S = SS	P = PP K = PVDF O = POMc	D = EPDM V = VITON N = NBR T = PTFE	1 = BSP A = BSP WITH RING 5 = NPT E = NPT WITH RING	-- zone 2	AB = STANDARD