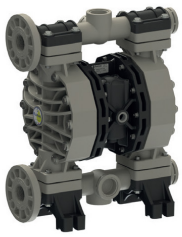


# P 400



PP



PVDF+CF



ALU



SS

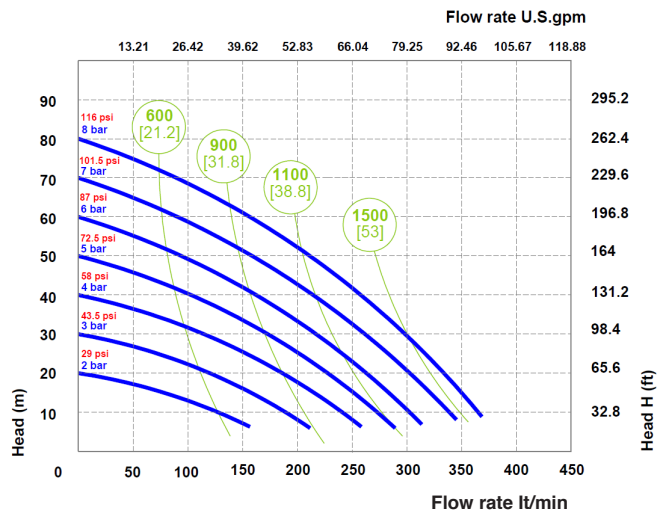
## TECHNICAL DATA

Fluid connections	<b>1 1/2" BSPP-DN 40</b>
Air connection	<b>1/2" BSPP</b>
Max. Flow rate	<b>380 lt/min</b>
Max air pressure	<b>8 bar</b>
Max delivery head	<b>80 m</b>
Max Suction Lift Dry	<b>5 m</b>
Max Suction Lift Wet	<b>9,8 m</b>
Max Solid passing	<b>8 mm</b>
Noise level:	<b>78 dB</b>
Max Viscosity:	<b>40.000 cps</b>
Displacement per Stroke:	<b>1200 CC ~</b>

Ⓢ II 3/3 G Ex h IIB T4 Gc  
 Ⓢ II 3 D Ex h IIB T135°C Dc X

Displacement per stroke may vary based on suction condition, discharge head, air pressure and fluid type.

## PERFORMANCE

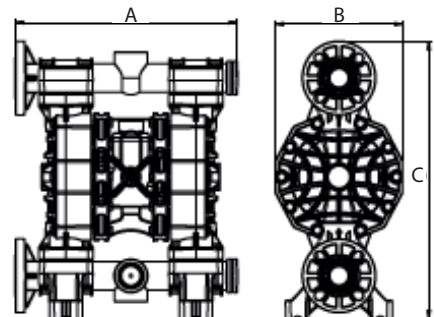


○ Air supply pressure  
 ○ Air consumption Nit/min [SCFM]

The curves and performance values refer to pumps with submerged suction and a free delivery outlet with water at 20°C. These data may vary according to the construction materials and hydraulic conditions.

## DIMENSIONS

	A	B	C	Net Weight	Temperature
PP	454 mm	260 mm	564 mm	18,2 kg	- 4 °C   + 65 °C
PVDF	454 mm	260 mm	564 mm	22,2 kg	- 20 °C   + 95 °C
ALU	444 mm	260 mm	563 mm	22,2 kg	- 20 °C   + 95 °C
SS	361 mm	260 mm	502 mm	25,3 kg	- 20 °C   + 95 °C



## COMPOSITION

MODEL	CASING	DIAPHRAGM	BALLS	SEATS	GASKET	CONNECTIONS	ATEX	PORTS
<b>P0400</b>	P = PP KC = PVDF+CF S = SS A = ALU	HT = HYTREL+PTFE MT = SANTOPRENE+PTFE H = HYTREL W = SANTOPRENE H.R. D = EPDM N = NBR	T = PTFE S = SS D = EPDM N = NBR	P = PP K = PVDF S = SS Z = PE-UHMWE	D = EPDM V = VITON N = NBR T = PTFE	1 = BSP 2 = FLANGED 5 = NPT	- = zone 2	AB = STANDARD EF = STANDARD SS