

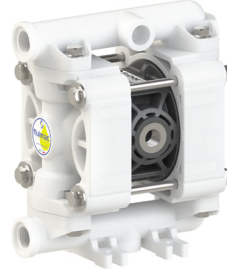
P 20



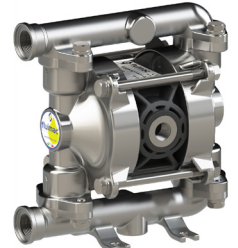
PP



PVDF+CF



POMc



SS

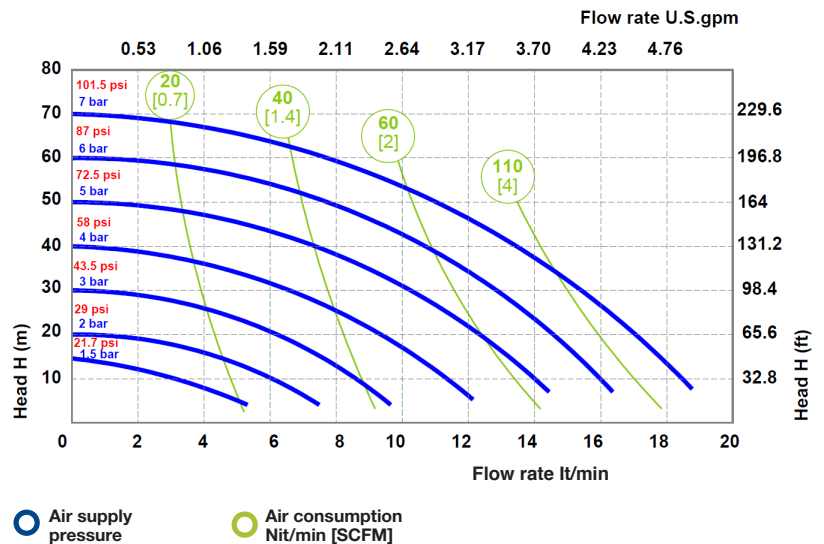
TECHNICAL DATA

Fluid connections	3/8" BSPP
Air connection	1/4" BSPP
Max. Flow rate	20 lt/min
Max air pressure	7 bar
Max delivery head	70 m
Max Suction Lift Dry	5 m
Max Suction Lift Wet	9,8 m
Max Solid passing	2,5 mm
Noise level:	65 dB
Max Viscosity:	10.000 cps
Displacement per Stroke:	30 CC ~

Ⓢ II 3/3 G Ex h IIC T4 Gc
 Ⓢ II 3 D Ex h IIIB T135°C Dc X

Displacement per stroke may vary based on suction condition, discharge head, air pressure and fluid type.

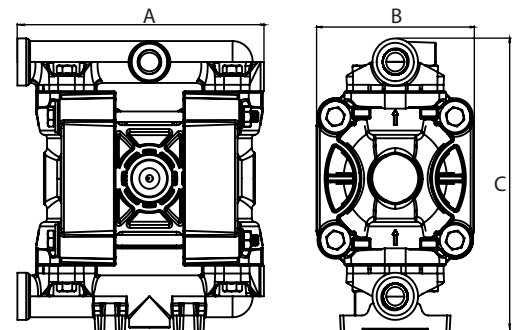
PERFORMANCE



The curves and performance values refer to pumps with submerged suction and a free delivery outlet with water at 20°C. These data may vary according to the construction materials and hydraulic conditions.

DIMENSIONS

	A	B	C	Net Weight	Temperature
PP	147 mm	93 mm	170 mm	1,3 kg	- 4 °C + 65 °C
PVDF	147 mm	93 mm	170 mm	1,6 kg	- 20 °C + 95 °C
POMc	147 mm	93 mm	170 mm	1,5 kg	- 5 °C + 80 °C
SS	148 mm	85 mm	152 mm	2,3 kg	- 20 °C + 95 °C



COMPOSITION

MODEL	CASING	DIAPHRAGM	BALLS	SEATS	GASKET	CONNECTIONS	ATEX	PORTS
P0020	P = PP KC = PVDF+CF O = POMc S = SS	HT = HYTREL+PTFE MT = SANTOPRENE+PTFE H = HYTREL W = SANTOPRENE H.R	T = PTFE S = SS	P = PP K = PVDF O = POMc S = SS	D = EPDM V = VITON N = NBR T = PTFE	1 = BSP A = BSP WITH RING 5 = NPT E = NPT WITH RING	- = zone 2	AB = STANDARD